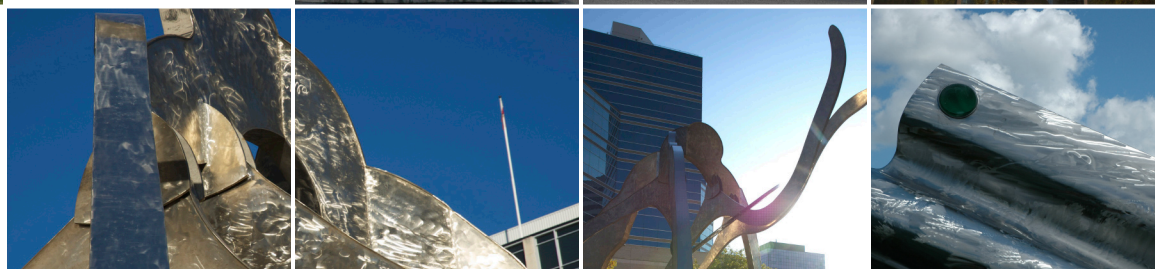


PHASE 1 – QUALIFICATIONS SUBMISSION  
**CANADIAN NAVY MONUMENT**  
NATIONAL DESIGN COMPETITION | MAY 4, 2009  
NCC PROJECT NO. SC-2035



GORDON REEVE in association with **Smith Carter**

# Contents

1.0 Cover Letter

2.0 Design Team

3.0 Curricula Vitae

4.0 References

5.0 Previous Work

6.0 Image List

May 4, 2009

Shirley Chartrand  
Senior Contract Officer, National Capital Commission  
40 Elgin Street, 3<sup>rd</sup> Floor Service Centre  
Ottawa, Ontario K1P 1C7

Dear Ms. Chartrand

**Re: Canadian Navy Monument Project – SC-2035**

Richmond Landing is breathtaking. Its history, context and remarkable topography suggest the possibility of rich, metaphorical imagery. The site “opens” cinematically with an establishing shot of Parliament Hill in the distance framed by sky, trees and river. Surrounded by water on three sides it sits, in plan, like a massive ship, peaceful and forever moored. People will of course come to this memorial wishing to remember battles won and lost and lives spent and lost at sea. And this they will be able to do. However, we believe the first challenge is to avoid didactic expressions of history and instead seek the many common threads that tie together the lives of all who go and have gone to sea in service of this country. We will propose a work which will facilitate movement and touch as a way of discerning meaning and also, as people traverse the site, the eliding and layering of time and evolving perception; much the way memory does. The goal is to signify, not glorify.

For almost two hundred years Richmond Landing has been a place for the beginnings and endings of journeys. The Navy Centennial Monument should be a place where the stories and journeys of the Canadian Navy continue to cross this landing so that all visitors to the site may find the story they seek. Our work may evoke in some the excitement and expectation that every seaman must surely feel when stepping aboard for the first time and in others the sensations felt below decks through a great steel hull pummeled by mountainous waves. There will be places where, on occasion, many hundreds may stand together and at other times, a person may stand in solitude and remember. Our submission will in its attention to detail and the provision of sacred space acknowledge that inherent in the decision to join the Canadian Navy and be ready to stand together is the knowledge that there will be times when one must be ready also to stand alone.

**Gordon Reeve** is team leader; a renowned site-sculptor and academic with an extensive portfolio of sensitive and inspiring landscape installations spanning over three decades. Gordon’s sensitive and analytical approach often leads to site inspired installations that immediately feel timeless and at home on their sites. Gordon is working in association with Smith Carter Architects and Engineers Incorporated. Smith Carter is one of Canada’s leading integrated design practices, a 170-person integrated architectural, landscape, engineering and interior design firm with offices in Winnipeg, Ottawa, Calgary and Atlanta. Smith Carter team members include **Michael Flynn**, Project Architect; **Emeka Nnadi**, Landscape Architect; and **Jennifer Brehm**, Landscape Designer.

Each member of our widely diverse team brings significant professional experience, accomplishment and focus to this project. While this team has not collaborated in the past, the partnership between Gordon Reeve and Smith Carter’s landscape architecture studio has materialized quite naturally from a shared belief that successful intervention and place-making can occur in unison with a site’s inherent ecological, aesthetic and cultural value. Both Gordon Reeve and Smith Carter value the collaborative design process, and anticipate an exciting and fruitful partnership based on shared passion, accountability and knowledge.

We believe that the combination of Gordon’s creative energy and leadership with Smith Carter’s commitment to design, sustainability and innovation in the delivery of projects for the Department of National Defence is the ideal recipe for creating an exceptional and unique Canadian Navy Centennial Monument.

Yours truly,

**Gordon Reeve**, BFA, MFA  
Team Leader

**Emeka Nnadi**, BArch, MLandArch, MALA, CSLA  
Landscape Architect



# 2.0 Design Team

## TEAM LEADER/ARTIST/SCULPTOR:

**Gordon Reeve**, BFA, MFA

## LANDSCAPE ARCHITECT:

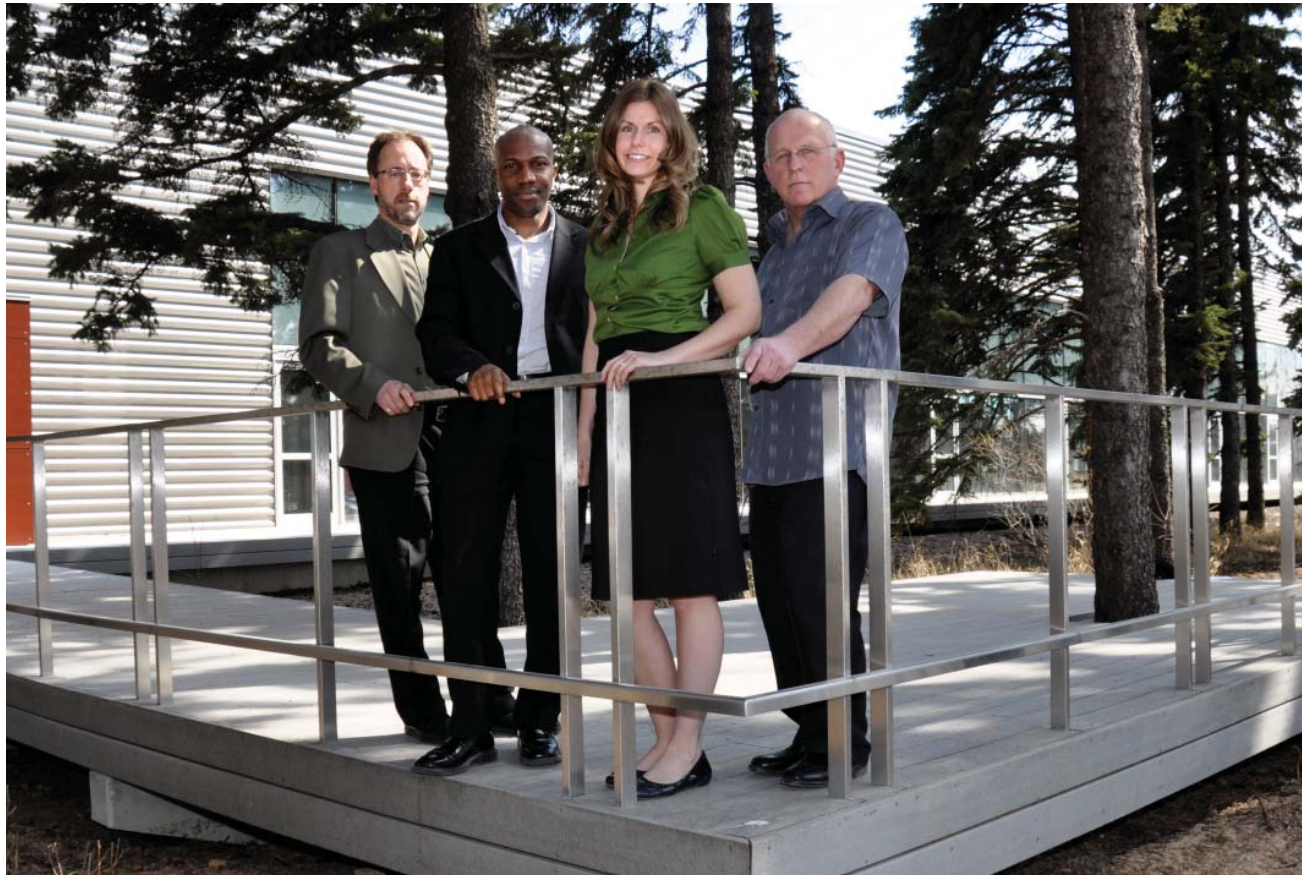
**Emeka Nnadi**, BArch, MLandArch, MALA, CSLA

## LANDSCAPE DESIGNER:

**Jennifer Brehm**, BArch, MLandArch

## PROJECT ARCHITECT:

**Michael Flynn**, MArch, MRAIC, MAA, LEED AP

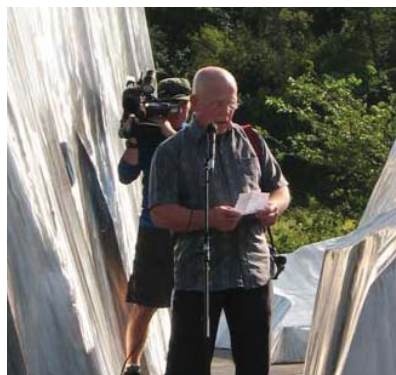


*Gordon Reeve/Smith Carter team (left to right): Michael Flynn, Emeka Nnadi, Jennifer Brehm, Gordon Reeve*

## 3.0 Curricula Vitae

# GORDON REEVE, BFA, MFA

ARTIST/SCULPTOR



**YEARS OF PROFESSIONAL EXPERIENCE**  
33

**EDUCATION AND QUALIFICATIONS**

**Bachelor of Fine Arts**, Cranbrook Academy of Art

**Master of Fine Arts**, Rhode Island School of Design

**Chair**, Sculpture Department, School of Art, University of Manitoba

I created my first site specific sculpture while studying at Cranbrook Academy of Art, a campus recognized as one of the jewels of American Landscape Architecture. That sculpture started with my awareness that with respect to site, the Minimalist Sculpture aesthetic current at that time seemed arbitrary and was essentially about itself, existing too often in spite of its surrounding landscape. On one of my walks, I discovered in a small forest, a crossing of paths that seemed both transient and permanent, both a meeting place and a mere marking of unspecified trajectories. I was so moved by that moment that I sought and was granted the privilege to create the first site-specific sculpture on that historic campus. The process of siting and making that sculpture was the genesis of my aesthetic/dynamic which sought to express intuited connections between art and environment. That process informs my practice to this day.

There is significant collaboration in all of my large scale work. Along with familiarizing myself with the site geography, I always research its history, seasonal climate and light conditions, and especially the effect it has on those who access or use it on a daily basis. Although I see my role as one of creative leadership, I have learned as a sculptor and film director that one must share the vision to enable other professionals to use their unique talents and expertise.

## SCULPTURE, SITE WORKS, JURIED COMPETITIONS

**Neil's Bjalla**, Stainless Steel Cast Bell, 9'x18", \$90,000, 2009

**Vickers Vedette**, Lac du Bonnet, Manitoba, Stainless Steel Sculpture with water feature honouring first Canadian made aircraft, 20'x20'x7', Includes program and site development plan, 2008-2009 (in progress - final budget \$70,000)

**Winner**, National Juried Competition, **Agassiz Ice**, Site Specific Sculpture, Assiniboine Park, Winnipeg, August 2008, Winnipeg Arts Council Public Art Program (\$75,000)

**Art on the Avenue**, Trained sculptors and oversaw production of 17 site-specific sculptures, Downtown Winnipeg Biz, 2006 and 2007

**Award of Merit**, National Juried Competition, **Les Megaferriques**, National Capital Competition, Ottawa (in collaboration with Brian Parker), 2007

**Where Words Go Once Spoken**, Tsunami Memorial International Competition, Oslo, Norway, 2006

**Luna**, Friesens Corporation, Altona, Manitoba, Stainless Steel, Glass Casting, 2003-2004 (\$35,000)

**Millenium Library**, Winnipeg, Model, 2003

**Sharon Screens**, Stainless Steel, Gold Plating, Three 4'x8' scrims, computer/ light interactive, 1999-2000 (\$35,000)

**Norwood Bridge Competition**, Winnipeg, Manitoba, Model, 1998

**Prairie Rainstorm**, Winnipeg, Manitoba, Juried Competition, Heritage and Culture, Province of Manitoba, 1987 (\$5,000)

**Northstar**, Kenora, Ontario, Waterfront, Stainless Steel, 9'x5', 1986 (\$15,000)

**Justice**, Winnipeg, Manitoba, Juried Competition, Provincial Courts, Stainless Steel, 42'H, 32,000 pounds, 1985 (\$48,000)

**Drumlin**, St. Vital Park, Winnipeg, Manitoba, Site Specific Installation, 90' loa and slide, Winnipeg Art Gallery, 1979 (\$1,600)

**Provincial Building**, Dauphin, Manitoba, Juried Competition, Provincial Building, 35'x6', 1978 (\$15,000)

**Finalist**, Winnipeg Centennial Library Competition, Winnipeg, Manitoba, 1977

**Ploughshare** (Stainless Steel 8'x5'x5') and **Essex Continuum** (Stainless Steel, 3 Rotating Towers), Essex County Catholic School Board, Juried Competition, First and Second Prize, 1974-1975, (Total - \$25,000)

# EMEKA NNADI, BArch, MLandArch, MALA, CSLA

## LANDSCAPE ARCHITECT



**YEARS OF PROFESSIONAL EXPERIENCE**  
10

### EDUCATION AND QUALIFICATIONS:

Bachelor of Architecture, University  
Technology, Nigeria (1991)

Master of Landscape Architecture,  
University of Manitoba (2000)

Vice President, Manitoba Association of  
Landscape Architects

Member, Canadian Society of Landscape  
Architects

### AWARDS

#### **Dan Ryan Woods Nature Preserve,**

Smith Group: LEED platinum  
conservatory and nature center, Group  
Project, 2002

#### **Chicago South Shore Framework**

**Plan,** Smith Group: American Society of  
Landscape Architects (ASLA) National  
award, Group project, 2001

**The Aquarian Gardens – Recovery &  
the Fabric of Nature,** Carl Nelson Award  
for Design Distinction: Integrated design  
proposal for the symbiotic healing  
of humanity and the environment.  
University of Manitoba, 1997

#### **Energy Conscious Single Family**

#### **Housing for the island of Malta,**

Commonwealth Association of  
Architects (CAA) Achievement Award:  
Design Competition, 1991

Emeka's primary role at Smith Carter is the leadership of Smith Carter's Landscape Architecture, Planning and Urban Design studio. With a strong commitment to design excellence and sustainable development, Emeka brings critical experience in the delivery of ecologically and culturally sensitive landscape architecture to this project.

## RELEVANT PROJECT EXPERIENCE

### **Waverley West Development, Winnipeg, MB**

Urban Design. Project Manager responsible for design and contract administration of this development initiative for the City of Winnipeg and Manitoba Housing and Renewal Corporation. Responsible for all levels of project delivery, for the integration of relevant new urbanism guidelines, and the design of a proposed town centre.

### **Great West Life, Park and Generator Enclosure, Winnipeg, MB**

Urban Design, Landscape Architecture and Project Management. The design of an urban park within Winnipeg's Downtown Design Review Board precinct. Incorporated a generator enclosure design.

### **CFB Petawawa, Petawawa, ON**

Urban/Master Planning. Project Manager Responsible for Master Realty Asset Development Plan (MRADP), a 30 year development realty asset planning for this large military training and operational base.

### **19 Wing Comox Combined Mess Facility, Comox, BC**

Landscape Architecture. Responsible for LEED Silver landscape architecture and site design for a 60,000 sq.ft. facility. The building is perched and cantilevers over a sloped site, featuring vertical green retaining walls and innovative storm water collection systems. (In progress.)

### **Nike Missile Site, Vernon Hills, IL**

Landscape Architecture, Urban design, Smith Group Inc. Master Plan and detailed design for 12-acre recreational park formally part of the U.S. Air Force's Strategic Defense System. Responsible for site design, grading plan, hand rendering as well as design and 3D modeling of building elements around a utilitarian, military theme.

### **South YMCA Redevelopment and Memorial Park**

Landscape Architecture. Responsible for landscape architecture and site design for an updated/renovated facility and site. The program includes the development of a contemplative memorial park.

# JENNIFER BREHM, BArch, MLandArch

LANDSCAPE DESIGNER



## YEARS OF PROFESSIONAL EXPERIENCE

5

## EDUCATION AND QUALIFICATIONS

Master of Landscape Architecture

University of Manitoba, 2004

Bachelor of Environmental Design  
2001

Graduate Member, Manitoba

Association of Landscape Architects

Associate Member, American Society  
of Landscape Architects

Foreign Studio, Berlin, Germany Fall  
2001

## AWARDS

Award of Excellence Florida Chapter  
American Society of Landscape  
Architects for WindMark Beach  
Community, Port St. Joe, FL, 2008

GA ASLA Award of Excellence  
Florida Chapter American Society of  
Landscape Architects for WindMark  
Beach Community, Port St. Joe, FL,  
2008

GA ASLA Award of Honor Florida  
Chapter American Society of  
Landscape Architects for WindMark  
Beach Community, Port St. Joe, FL,  
2008

Jennifer's career has focused on the design and planning of large scale master plan communities, and themed recreational areas located around the world. She has been involved with projects in Canada, the United States, Mexico, UAE, Saudi Arabia and Europe and has received several awards for her work. Jennifer has been specifically responsible for both master planning and landscape design projects including the development of culturally sensitive park spaces, public areas, and circulation patterns for pedestrians and vehicles.

## RELEVANT PROJECT EXPERIENCE

### Atlanta Botanical Garden, Atlanta, Georgia

Landscape and 'hardscape' design for new visitor center and parking deck.

### Watersound, Florida, USA

Landscape architectural design and construction documents for a Neo-Traditional mixed-use residential and resort community.

### Garza Ponce Vivienda, Mexico

Master plans for four new communities to be developed for workforce housing in Mexico.

### Russell Lands Master Plan, Lake Martin, Alabama

Master plan for 25,000 acres located adjacent to Lake Martin in Alabama.

### Dubailand Theme Park City, Dubai

Conceptual master plan for the development of a theme park city in Dubai.

### Caesars Spain, Ciudad Real, Spain

Landscape architecture services for an 800 room hotel and casino interpreting and merging the style and spirit of the 'Caesars Palace' property in Las Vegas, Nevada with those of actual Roman designed projects in the Mediterranean.

### Baha Mar, Cable Beach, Bahamas

Master plan refinement and landscape framework plan for a grand resort on the island of New Providence, including five-star hotels, casinos, residential developments, an entertainment village, swimming, golf, and related facilities.

### Abita Springs New Community Master Plan, Abita Springs, Alabama

Master plan for a 8,089 acre new community to be developed on former timberland in St. Tammany Parish in southeast Louisiana.

### Women's Campus, Riyadh, Saudi Arabia

Landscape master plan for a women's campus in Saudi Arabia.

### Windmark Beach, Gulf County, Florida

Master landscape architecture planning and design for pedestrian 'hardscape' and design guidelines for this 2,200-acre Neo-Traditional mixed-use residential and resort community located along a 3 ½ mile stretch of re-located highway 98 in Gulf County.



# MICHAEL FLYNN, MArch, MRAIC, MAA, LEED AP

PROJECT ARCHITECT



**YEARS OF PROFESSIONAL EXPERIENCE**  
18

**EDUCATION AND QUALIFICATIONS**  
Master of Architecture, University of Manitoba, 1992  
Bachelor of Environmental Studies, University of Manitoba, 1988  
Member, Manitoba Association of Architects  
Member, Royal Architectural Institute of Canada  
Leadership in Energy and Environmental Design (LEED) Accredited Professional, US Green Buildings Council, 2004  
Member, Project Management Institute

Michael is a project architect who works almost exclusively within the firm's Security and Defence portfolio. He has worked extensively on military bases across Canada, and has been responsible as Project Manager or Project Architect for the delivery of more than 50 projects for the Department of National Defence. Michael's great-grandfather was the first Admiral in Canada's Naval Service, and he has a particular interest in the design and delivery of projects for Canada's Navy. His relevant project experience includes the following:

## RELEVANT PROJECT EXPERIENCE

### **Naval Officer Training Centre, CFB Esquimalt, BC**

Project Architect for this Naval Officer Training Centre which provides new \$18 million accommodation and dining facilities at CFB Esquimalt. The six-storey building includes 86 cabins with support facilities, and the dining room is comprised of a galley, server, and 252-seat dining room. It was the first Department of National Defence project to incorporate sustainable design and the LEED scoring system in the design, and a qualitative selection process.

### **Firehall and Base Command Post, CFB Esquimalt, BC**

Project Architect for this new 4 300 sm facility at CFB Esquimalt housing critical operational groups dealing with natural disasters, accidents, and terrorism. The Base Command Post is responsible for responding to environmental and civil emergencies in a post-disaster scenario and the Fire Hall provides fire fighting services for CFB Esquimalt and the immediate surrounding communities. As this facility is in an urban environment fronting on a major public thoroughfare, security and safety of occupants and operational capability were major concerns. Environmental considerations were an integral part of the design process.

### **Maritime Helicopter Training Centre, 12 Wing Shearwater, NS (2007)**

Project Architect for this project involving a school to train maintenance and flight personnel for the new Maritime Helicopter.

### **Combined Mess and Single Quarters Facility, 19 Wing Comox, BC**

New \$25 million facilities to accommodate 19 Wing dining and mess requirements, administrative functions, a multi-purpose conference/training facility, and new single quarters to support short trade courses and for personnel temporarily posted to the base.

### **Maritime Helicopter Training Centre, School House and Squadron Facilities, 12 Wing Shearwater, NS**

Project Architect for this study evaluating several sites to house new maritime helicopters for the Canadian Navy. Services included a functional space program, existing facility report to determine functional suitability of existing facilities for potential reuse, and an accommodation plan to optimize the use of existing infrastructure and new construction.

# 4.0 Client References

## FOR GORDON REEVE:

*Agassiz Ice, Juried Competition:*

### **Tricia Wasney**

Winnipeg Arts Council  
Suite 103 - 110 Princess Street, Winnipeg, MB R3B 1K7  
T (204) 943-7668  
E [twasney@winnipegarts.ca](mailto:twasney@winnipegarts.ca)

*Luna (Commission):*

### **David Friesen**

Past-President, Friesen's Corporation  
T (204) 324-9500  
E [davidf@friesens.com](mailto:davidf@friesens.com)

*Collaborator:*

### **Brian Parker**

27 Marshall Street, Fredericton, MB E3A 4J8  
T (506) 450 3898 (home)  
E [rootb@nbnet.nb.ca](mailto:rootb@nbnet.nb.ca)

*Vedette/Remediation of the Wilderness Boundary:*

### **Gordon Emberley**

MHAC Chair, RM of Lac du Bonnet, Manitoba  
T (204) 345 8916 (home)  
E [vergo@mts.net](mailto:vergo@mts.net)

*Supervised and trained seventeen students for sculpture commission for installation in downtown Winnipeg business zone:*

### **Stephanie Voyce**

Project Coordinator, Downtown Winnipeg BIZ  
426 Portage Avenue, Winnipeg, MB R3C 0C9  
T (204) 226 2151  
E [stephanie@downtownwinnipegbiz.com](mailto:stephanie@downtownwinnipegbiz.com)

## FOR EMEKA NNADI:

*Client - Waverley West Project:*

### **James Gallagher**

Manitoba Housing and Renewal Corporation  
2707-83 Garry Street  
Winnipeg, MB R3C 4J9  
T (204)945-5278

## FOR JENNIFER BREHM:

*Project Supervisor:*

### **Todd Hill**

EDAW  
The Biltmore, Suite 770  
817 West Peachtree Street, NW  
Atlanta, GA 30308  
T 404 870 5339

## FOR MICHAEL FLYNN:

*Client (Department of National Defence):*

### **LCdr Clive Orford**

Director General Maritime Development  
National Defence Headquarters  
Major General R. Pearkes Building  
101 Colonel By Drive  
Ottawa, Ontario K1A 0K2  
T (613) 945-0486  
E [orford.ch@forces.gc.ca](mailto:orford.ch@forces.gc.ca)

## 5.0 Previous Work

Project Title: **Agassiz Ice**

Team Member: **Gordon Reeve**

Date: 2008

Budget: Stainless Steel Sculpture: \$75,000  
Black Reinforced Concrete Base: \$30,000  
National Juried Competition

Location: Assiniboine Park, Winnipeg, Manitoba, Canada

Material/Size: Stainless Steel  
*3 separate elements:*  
H 4.8 metres x W 2.5 metres x L 5 metres  
H 3 metres x W 3.5 metres x L 4.4 metres  
H 1 metres x W 3.2 metres x L 2.8 metres  
*Stainless steel base:*  
12 metres x 12 metres  
*Piles:* 11 piles @ 10 metres  
*Total Weight:* 2,000 kg



Imagine Agassiz, a crystal clear ice melt lake at the beginning of time. As the glacier's thousand metre high wall receded northward it dropped giant shards of ice into the newly-born lake. Ninety percent of their mass settled secretly beneath the water. Imagine three of those icebergs preserved over countless years standing now in our midst. That which is hidden from our eyes need not be hidden from our mind.



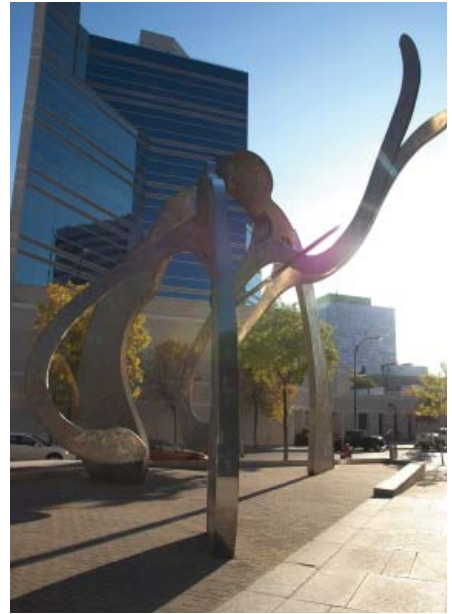
Located in Winnipeg on the Portage Avenue side of the Assiniboine Park footbridge, this sculptural spectacle is visible from the park and the banks of the Assiniboine River. Assiniboine Park is one of Canada's largest urban parks, visited by millions of people every year. The commission was the winner of the Winnipeg Arts Council's public art program, and was selected from a shortlist of five artists.

Agassiz Ice looks like three sparkling glacial peaks rising from the ground. Constructed out of stainless steel, the sculpture is nearly five metres at its tallest peak and weighs 2,000 kilos, which adds to its massive presence. The contours form a wave-like effect and the stainless steel is hand-polished with a swirl-like pattern that adds depth and texture. The structure evokes the pristine chunks of glacial Lake Agassiz, which once covered the city of Winnipeg.

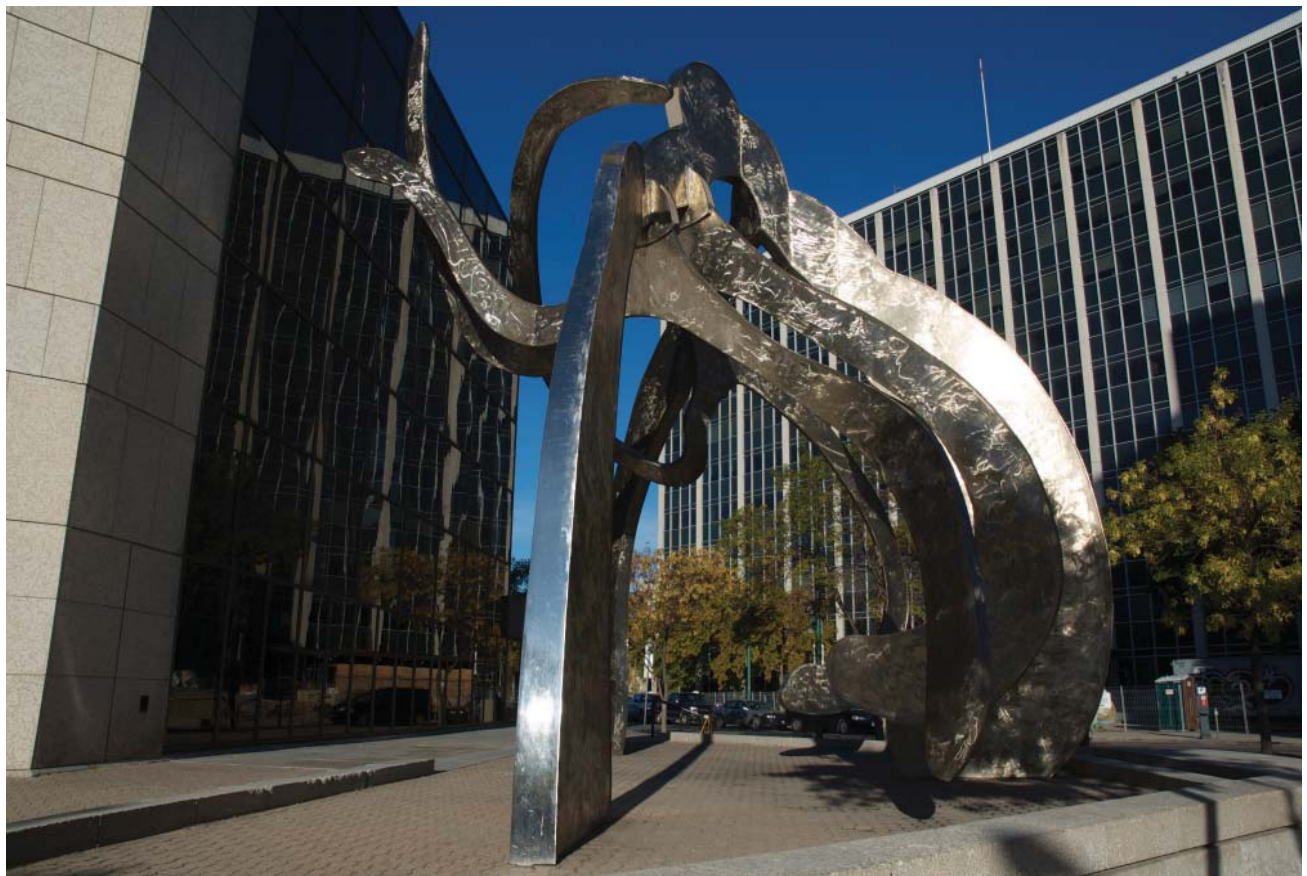
The project has strong historical reference, and also carries a deeper meaning. The piece represents the beautiful physical environment we live in, and like the glacier itself, there is more than is apparent on the surface. Beneath the surface of Agassiz Ice, there are 10 cement piles that will allow this work to last — creating a legacy it rightfully deserves.



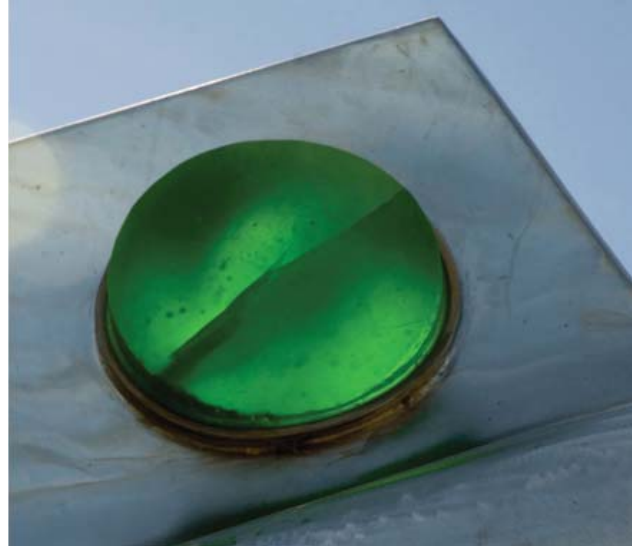
Project Title: **Justice**  
Team Member: **Gordon Reeve**  
Date: 1985  
Budget: \$48,000  
Juried Competition  
Location: Law Courts Building, Winnipeg,  
Manitoba, Canada  
Material/Size: Stainelss steel  
H 13 metres x W 12 metres x L 12 metres  
*Total Weight: 14.5 metric tonnes*



The ideal of Justice confronts the edifice of Justice. Thirteen metres in height and nearly as wide at the base the tripodal form is a structure of great strength and integrity capable of supporting the dynamic load of three twelve-metre long movable arms weighing one metric tonne each. Suspended twelve metres in the air, these are the *principles* suspended from the *framework* of Justice. Even a child, the most vulnerable member of a just society, is able to move these great weights.



Project Title: **Luna**  
Team Member: **Gordon Reeve**  
Date: 2004  
Budget: \$35,000  
Location: Altona, Manitoba  
Material/Size: Stainless steel/cast glass  
H 3.6 metres x W 2.4 metres x L .3 metres  
*Total Weight: 680 kg*



Luna sits at the centre of a garden oriented to face east/west. A cast glass element pierces the upper corner of the sculpture and is visible from both sides. Over the course of the day, the transit of the sun across the north/south axis of the site illuminates it as if from within. In direct sunlight the undulating surface creates the illusion of a view through, rather than of, the sculpture - more window than wall.





Project Title: **Film and Video on Art and Performance**

Team Member: **Gordon Reeve**

Date: 1988-2002

Budget: \$1,600,000 Total Production Budget

Location: Various - see below



*Will to Win, Paris. The film crew is on stage in the new Paris Opera House. Seen are (left to right) Gordon Reeve, film crew, opera singers Ruggero Raimondi, Luciano Pavarotti and Canadian Architect, Carlos Ott.*

2002 **Harawi - Olivier Messaien** Experimental video - music/dance (\$5,000)

1996-98 **Right to No**, CBC, Telefilm, MFS (\$24,000)

1997-98 **Blue Salute**, Manitoba Film and Sound, Telefilm Canada (\$20,000)

1992-93 **Walks Fast Woman**, one hour documentary on Olympic runner Angela Chalmers, treatment development, CBC, MF&S, Telefilm Canada (\$60,000)

1990-92 **Moment of Light - The Dance of Evelyn Hart**, Paris, Munich, Tokyo and Winnipeg, Telefilm Canada, MFS, Global, co-production with the NFB, Rhombus Medial, International. Broadcast in Australia, Israel, Italy, Japan, Korea, Portugal, Spain, US (\$759,000)

1988-90 **The Will to Win/La rage de vaincre**, English and French versions, One hour documentary, 16mm film, performances and/or interviews with Luciano Pavarotti, Barbara Hendricks, Theresa Berganza. Monaco, Paris, Venice, Montevideo, Verona, New York, Toronto. Telefilm Canada, Manitoba Film and Sound (\$639,000)

1988 **I Am the Hornblower**, Ivan Eyre, National Gallery of Canada, Ottawa

1988 **Brancusi Miastra**, The Sculpture of Constantin Brancusi, Paris and New York

1988 **In Hidden Gardens**, Bourdelle, Zadkine, Rodin, Bourdelle, Picasso Museum, Paris

1988 **The Music of Colour**, Kandinsky, Thomas Messer, Guggenheim Museum, NYC, Paris

1988 **Future Imperfect**, Collection of Lydia Winston Malbin, Collector of Futurist Art, NYC

1987 **I Must Paint What I See**, Otto Dix, Interviews with his son Ursus, Avignon, France

1987 **Enigma - Part 2**, Marcel Duchamp, 1912 until his death, First Documentation of Duchamp's last work, *etant donne*.

1987 **Enigma - Part 1**, The early works of Marcel Duchamp, Interview with Anne D'Harnoncourt, Director of the Philadelphia Museum of Art. Paris, NYC, and Philadelphia

1987 **Statues that Will Sing**, Dina Vierny discusses Aristide Mailol, Paris

1987 **The Father He Never Knew**, Vladimir Barranoff-Rossine

1987 **A Language to Be Seen, Part Two**, Pablo Picasso and Georges Braque, L'Orangerie, Paris

1987 **A Language to Be Seen, Part One**, Pablo Picasso and Georges Braque, Paris

1987-88 **Harvest - The Tradition**, Series of 13 half hour documentaries

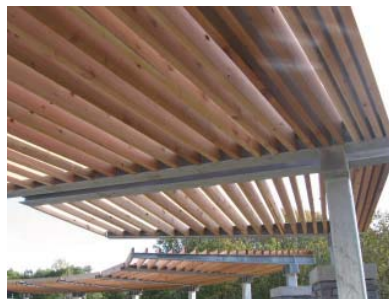
1987 **Winnipeg in 1912**



*Moment of Light, Munich. Gordon Reeve with Evelyn Hart.*

Project Title: **Waverley West Urban Design**  
Team Member: **Emeka Nnadi**  
Date: 2006 to Present - Phase 2 in progress  
Budget: \$ 15M  
Location: Winnipeg, Manitoba, Canada  
Size: 5 acres

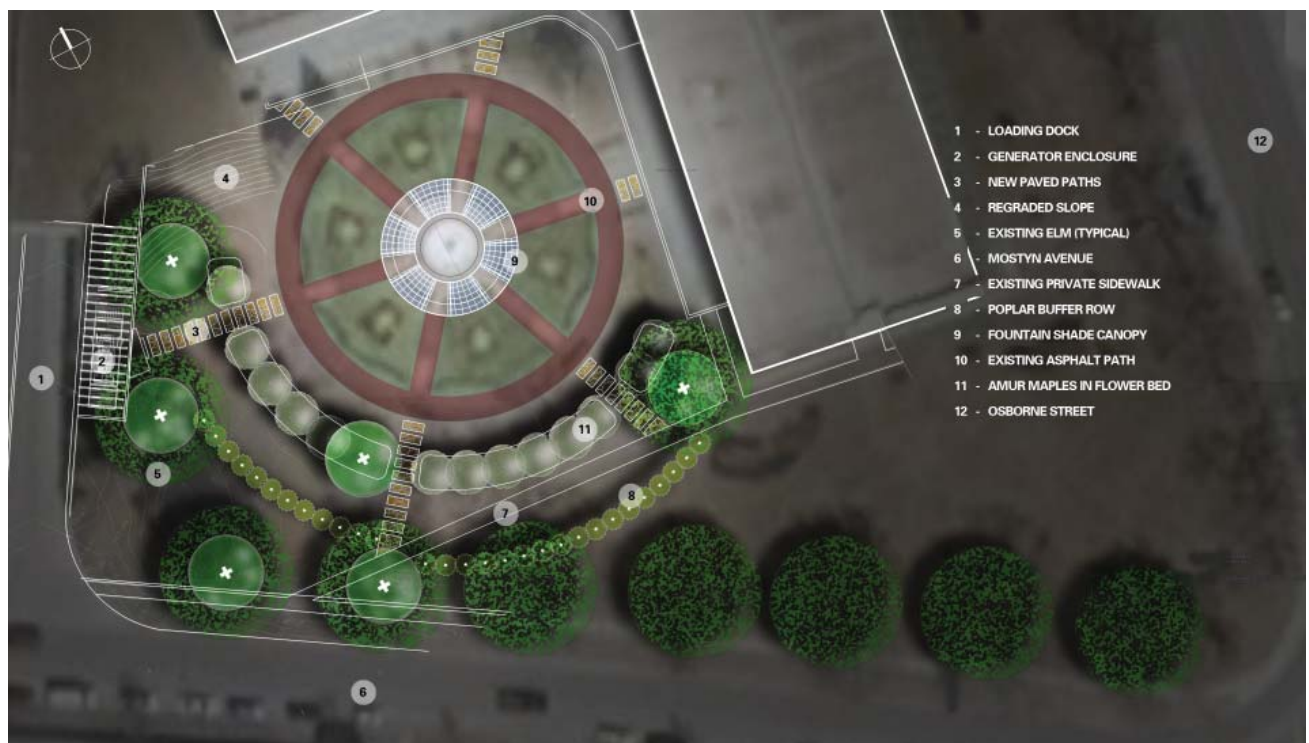
This New-Urbanism-inspired subdivision is designed with express goals of being **green, walkable** and **unique**. To this end Smith Carter has dedicated over 25% of all land to natural open space, with four naturalized lakes, an active recreational park, and 25-acres of accessible, protected mature forest. There is a majestic plaza and fountain nestled within a forest clearing, and many other urban amenities designed to enhance the resident quality of life.





Project Title: **Great West Life Park/Plaza**  
 Team Member: **Emeka Nnadi**  
 Date: 2009 (Under Construction)  
 Budget: \$25,000  
 Location: Winnipeg, Manitoba, Canada  
 Size: 0.7 Acres

The design of this park and plaza had to meet the stringent guidelines of Winnipeg's Downtown Design Review Board. Initially conceived as a generator enclosure shed, the project evolved to include a redesign of the entire plaza to create an engaging, contemplative employee respite area, peacefully nestled between the building and the public sidewalk edge.





Project Title: **Smith Carter Head Office**

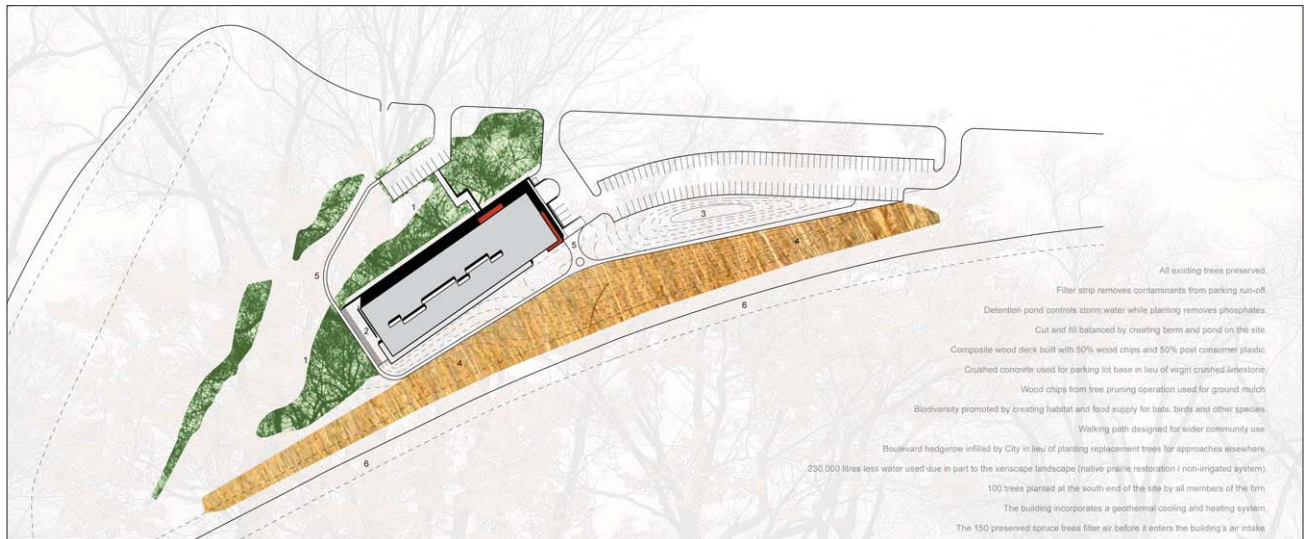
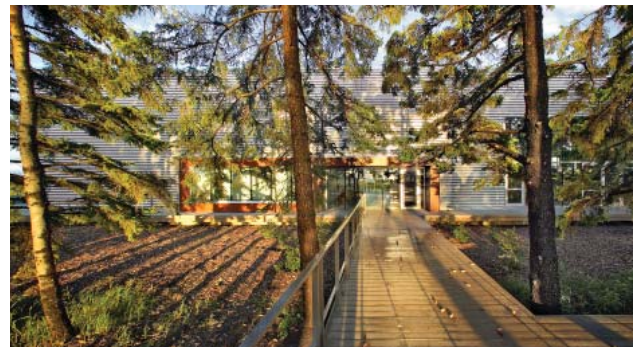
Team Member: **Emeka Nnadi**

Date: June 2004

Budget: \$11M

Location: Winnipeg, Manitoba, Canada

This new head office for Smith Carter is the recipient of numerous awards including the 2006 Royal Architectural Institute of Canada Governor General's award and the 2007 Canadian Society of Landscape Architects Award of Merit. The project was designed to LEED Gold (with LEED Platinum Certification pending) and is a testament to collaborative design. The site was developed so that all 150 existing spruce trees were preserved during and after construction and became integral to an 'outside/inside' site experience. An environmentally responsible (partially grass-paved) parking lot, along with a naturalized tall grass prairie and retention pond, contribute to the function and aesthetics of the project.





Project Title: **South YMCA Park & Memorial Garden**

Team Member: **Emeka Nnadi**

Date: 2007

Budget: \$ 1.2M

Location: Winnipeg, Manitoba, Canada

Size: 3.5 acres

The Winnipeg YMCA engaged Smith Carter to redevelop an existing facility and site. Included in the scope was the development of a memorial plaza commemorating a historic park at this location. The program included a running track, 2 soccer fields, a gazebo and a parking lot expansion. The project required the development of a sensitive buffer area for residents and incorporated several sustainable innovations.





Project Title: **Watersound**  
Team Member: **Jennifer Brehm**  
Date: 2005 - present  
Budget: \$20 million  
Location: Watersound, Florida, USA  
Size: 1,400 acres

The Town of WaterSound is a place defined as much by its diversity as its commonality. It sits on 1,400 acres, bordered by the Intercoastal Waterway to the north and Lake Powell, one of the world's rare dune lakes, to the east. WaterSound is planned to include approximately 1,000 single-family home sites, as well as retail, recreational and cultural venues, ideally located between the resort towns of Destin and Panama City Beach and not far from the new international airport, currently under construction.

It is a place greatly influenced by its natural surroundings, inspired by historic architectural styles and dedicated to providing a life rich in culture, recreation, discovery and entertainment.





Project Title: **Atlanta Botanical Garden**

Team Member: **Jennifer Brehm**

Date: January 2005

Budget: \$5 million

Location: Atlanta, Georgia, USA

Size: 30 acres

The Atlanta Botanical Garden is an urban, non-profit Garden located just three miles from the city center in midtown Atlanta. It occupies 30-acres adjacent to Piedmont Park, the most heavily-used public park in the city. The Garden encompasses 13 acres of woodland and 15 acres of cultivated gardens. Included among these gardens are two acres for the Children's Healthcare of Atlanta Children's Garden (1999), along with the Dorothy Chapman Fuqua Conservatory (1989), the Fuqua Orchid Center and Center for Education and Conservation (2002), Gardenhouse, the administrative center (1985), and Mershon Hall for youth education and meeting room(2003). In November 2007, the Green Expansion Plan broke ground, to build a LEED Certified Visitor Center with green roof, a green parking facility tucked into a steep hillside, a Canopy Walk soaring 40 feet into the tree canopy, a 95,000 gallon cistern to harvest storm water runoff including a cascade and edible plant gardens.



Project Title: **Garza Ponce Vivienda**  
 Team Member: **Jennifer Brehm**  
 Date: May 2007  
 Budget: \$500,000  
 Location: San Luis, Reynosa, Cadereyta, Mexico  
 Size: 679 hectares  
 (total for all three communities)

These three projects are new developments providing housing for residents relocating to join the local work-force. The Master Plans of these communities focus on planning and design principles shaping the neighborhoods by physical definition and universally accessible public spaces.

The location of community institutions and facilities; town centers, plazas, and urban places are framed by architecture and landscape design celebrating local history, climate, ecology, and building practice.



Cadereyta



Reynosa



San Luis



Project Title: **Naval Officer Training Centre,  
CFB Esquimalt, BC**

Team Member: **Michael Flynn**

Location: CFB Esquimalt, BC

Date: February 2005

Budget: \$ 15,578,000

Size: 9 800 m<sup>2</sup>

Smith Carter was the Advocate Consultant for the Naval Officer Training Centre which provides new 9 800 m<sup>2</sup> dining and accommodation facilities at Workpoint, CFB Esquimalt, overlooking Esquimalt Bay.

In collaboration with Department of National Defence stakeholders, Smith Carter facilitated an integrated design approach to establish appropriate performance and sustainability criteria, promoting such variables as local procurement of materials and labour, maximum use of natural ventilation and daylighting, high efficiency equipment, recycled structural content, and green site planning minimizing runoff and utilizing the site's natural topography.

The resulting design included solar chimneys enabling 100% free cooling, water conserving plumbing fixtures, drought-tolerant landscaping, widespread use of recycled or reclaimed materials including heavy timber structural members, masonry, rebar, fly ash concrete, formwork and structural steel.



Project Title: **Combined Mess and Single Quarters**

Team Member: **Michael Flynn**

Location: 19 Wing, CFB Comox, BC

Date: 2011

Budget: \$ 24 million

Size: 5 300 m<sup>2</sup> total

These new facilities will accommodate all of 19 Wing's dining and mess requirements, as well as provide quarters to support short training courses and personnel posted to the Wing temporarily. It also includes multi-purpose conference and training rooms and administration functions.

The design for the facilities captures the essence of its purpose, a sense of place in the landscape, and the spirit of military culture. Combining all ranks in one facility is contrary to tradition, yet it is a reality in today's military. Nonetheless, the challenge was to respect the need for discretion and identity, while combining all necessary functions in one efficient facility. Identity and privacy are achieved by developing distinct elements for each rank that also define a segregated area of the landscape for private outdoor activities. All of these functions are connected by an extensive public walkway - the "runway." Drawing from both air force and naval imagery as well as the coastal environment - the Wing is adjacent to the Strait of Georgia, and supports Naval patrol - the building rises out of the ground, reaching out, floating, stretching its wings.





Project Title: **Firehall and Base Command Post**

Location: CFB Esquimalt, BC

Team Member: **Michael Flynn**

Date: Fall 2009

Budget: \$ 21 million

Size: 4 300 m<sup>2</sup> total

The new facility at CFB Esquimalt houses two critical operational groups – the Fire Hall and the Base Command Post. The Base Command Post is responsible for responding to environmental and civil emergencies in a post-disaster scenario and the Fire Hall provides fire fighting services for both CFB Esquimalt and the immediate surrounding communities.

The facility is designed as one building segmented by a gallery, which establishes a sense of distinctness and identity for each of the two functions. The gallery also functions as a control point for visitors and links public and private zones. The day worker environment on the west side includes offices, emergency response centre, maintenance, and storage functions. The 24/7 operational environment on the east side includes 10 drive through apparatus bays for fire fighting equipment, turn-out gear cleaning and storage, and training and support facilities.

Because this facility is in an urban environment fronting on a major public thoroughfare, security and safety of occupants and operational capability is a major concern. The design establishes public / private / secure zones as a hierarchy of space with boundaries, and provides access control, visual and electronic monitoring, and target hardening. Electronic security is addressed by zoning critical functions and maintaining applicable setbacks.

Environmental considerations were an integral part of the design process. Numerous strategies have been selectively incorporated to achieve a Leadership in Energy and Environmental Design (LEED) Silver rating. Strategies such as reducing energy and water consumption in building operation, selecting renewable and regional materials, enhancing the indoor air quality through exclusion of CFCs, carbon dioxide level monitoring, ventilation control (including free cooling), and maximizing the building occupants views and day-lighting to create a desirable and comfortable work environment.



# 6.0 Image List

ReeveG\_image 01.jpg - Agassiz Ice - Gordon Reeve

ReeveG\_image02.jpg - Agassiz Ice - Gordon Reeve

ReeveG\_image03.jpg - Justice - Gordon Reeve

ReeveG\_image04.jpg - Justice - Gordon Reeve

ReeveG\_image05.jpg - Luna - Gordon Reeve

ReeveG\_image06.jpg - Waverley West Urban Design - Emeka Nnadi

ReeveG\_image07.jpg - Smith Carter Head Office - Emeka Nnadi

ReeveG\_image08.jpg - Watersound - Jennifer Brehm

ReeveG\_image09.jpg - Atlanta Botanical Garden - Jennifer Brehm

ReeveG\_image10.jpg - Mess and Quarters, CFB Comox - Michael Flynn

